



Crater Lake National Park Weather 05/13/2010



YESTERDAY'S WEATHER

As recorded at Park Headquarters between
8 AM yesterday and 8 AM today:

HIGH TEMPERATURE	47
LOW TEMPERATURE	26
TEMPERATURE AT OBSERVATION	32
PRECIPITATION (MELTED)	0
NEW SNOW	0
DEPTH ON GROUND	87
AVG. SNOW DEPTH THIS DATE	83.9
PERCENT OF AVERAGE	103.7
ACCUM PRECIP (MELTED) (from 10/1 of 09)	53.82
AVE. ACCUM PRECIP THIS DATE	58.83
PERCENT OF AVERAGE	91.5
ACCUM SNOWFALL (from 10/1 of 09)	401.31
AVG ACCUM SNOWFALL THIS DATE	509.3
PERCENT OF AVERAGE	78.8
<ul style="list-style-type: none"> ○ Seasonal average (melted) precipitation is 66 inches ○ Greatest total precipitation is 91.5 inches, winter of 1981/82 ○ Seasonal average snow accumulation is 524 inches (43 ½ feet). ○ Greatest recorded seasonal snow accumulation was 834 inches (69 ½ feet) during the winter of 1932-1933. ○ Greatest recorded snow depth was 252 inches (21 feet) set April 3, 1983. 	
SUNRISE 0548	SUNSET 2019

FORECAST

Today: Sunny, with a high near 52. Southeast wind between 6 and 9 mph.

Tonight: Partly cloudy, with a low around 35. South southwest wind between 3 and 6 mph.

Friday: A 20 percent chance of showers and thunderstorms after 11am. Partly cloudy, with a high near 53. South southeast wind between 6 and 9 mph.

Friday Night: A 20 percent chance of showers and thunderstorms before 11pm. Mostly cloudy, with a low around 37. West northwest wind between 6 and 9 mph becoming calm.

Saturday: A 30 percent chance of showers and thunderstorms after 11am. Mostly cloudy, with a high near 54. South southwest wind between 5 and 7 mph.

Saturday Night: A 30 percent chance of showers and thunderstorms before 11pm. Mostly cloudy, with a low around 37.

Sunday: A chance of showers, with thunderstorms also possible after 11am. Mostly cloudy, with a high near 50. Chance of precipitation is 30%.

Sunday Night: A chance of showers and thunderstorms. Mostly cloudy, with a low around 35.

Monday: A chance of rain showers. Snow level 7300 feet. Mostly cloudy, with a high near 39.

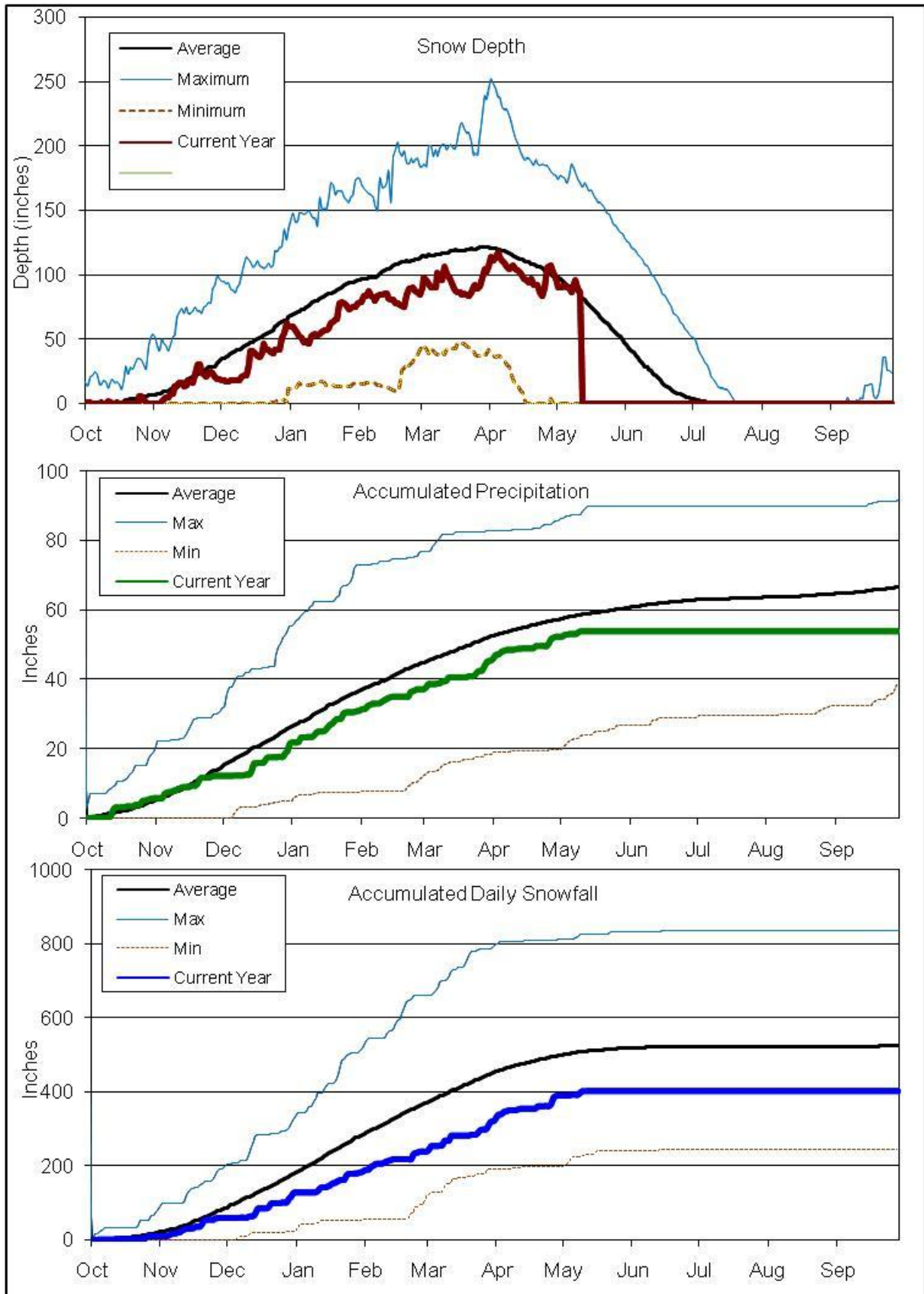
Monday Night: A chance of snow showers. Mostly cloudy, with a low around 26.

Tuesday: A chance of snow showers. Mostly cloudy, with a high near 35.

Tuesday Night: A chance of snow showers. Mostly cloudy, with a low around 31.

Wednesday: A chance of rain and snow showers. Mostly cloudy, with a high near 37.

CRATER LAKE REPORT 05/13/2010



CRATER LAKE A.M. REPORT – 05/13/2010

Road to the Rim **OPEN**
East Rim Drive **CLOSED**
West Rim Drive **CLOSED**
North Entrance Road **CLOSED**
Mazama Gas Station **CLOSED**
Mazama Store **CLOSED**
Rim Village Café and Gift Shop **OPEN** (10 a.m. to 5:00 p.m. *when* the Road to the Rim is open)
Sinnott Memorial Overlook and Exhibit Room **CLOSED**
Steel Information Center **OPEN** (9 a.m. to 5 p.m.)
Rim Visitor Center **CLOSED**
Annie Creek Gift Shop **CLOSED**
Annie Creek Restaurant **CLOSED**
Mazama Campground **CLOSED**
Lost Creek Campground **CLOSED**

Spring opening operations will take place ¼ mile north of the Diamond Lake Overlook.

Post Office hours are 9 a.m.-12 p.m. and 1-3 p.m. Monday through Saturday. The Post Office is closed Sunday and all major holidays.

911 EMERGENCY REMINDER: When dialing 911 from a park phone, please remember you must dial 9-911. Also, be aware there is a delay. Dial 9-911 and wait for the connection

Trails Report 04/25/2010

As spring sets in, creeks and obstacles will become evident once again; be heads up.

Many natural and skier triggered avalanches have been observed this year. Be prepared, know your limits, and know your equipment.

Mazama Loop Ski Trail is closed for spring opening of Mazama Village. Signs have been taken down from all ski routes, trails and trailheads.